

# TSP431 SPECIFICATIONS

## pure·2 thermostatic tubfiller with handshower

### FEATURES:

- In-wall thermostatic tubfiller and handshower, handshower includes 42" smooth Neoperl shower hose with conical swivel connections
- Standard 9" spout with customized laminar flow, spout interchangeable with handshower
- Single-handle temperature control
- High-flow valving
- High-temperature limit setting for added safety
- Temperature-balancing mechanism
- Scald hazard prevention
- Integral stops
- Crossflow prevention
- Serviceable filter screens
- Requires TS430 rough-in

### SPECIFICATIONS:

Warranty:	Limited lifetime warranty (residential) One year warranty (commercial)
Connection:	NPT 3/4"
Material:	Brass body
Flow rate:	14.0 gpm @ 60 psi (output will vary depending on device in operation)
Handshower flowrate:	2.0 gpm @ 80 psi

### FINISHES:

Polished chrome

### ACCESSORIES:

Requires rough-in TS430  
Optional spout lengths available

### INSTALLATION:

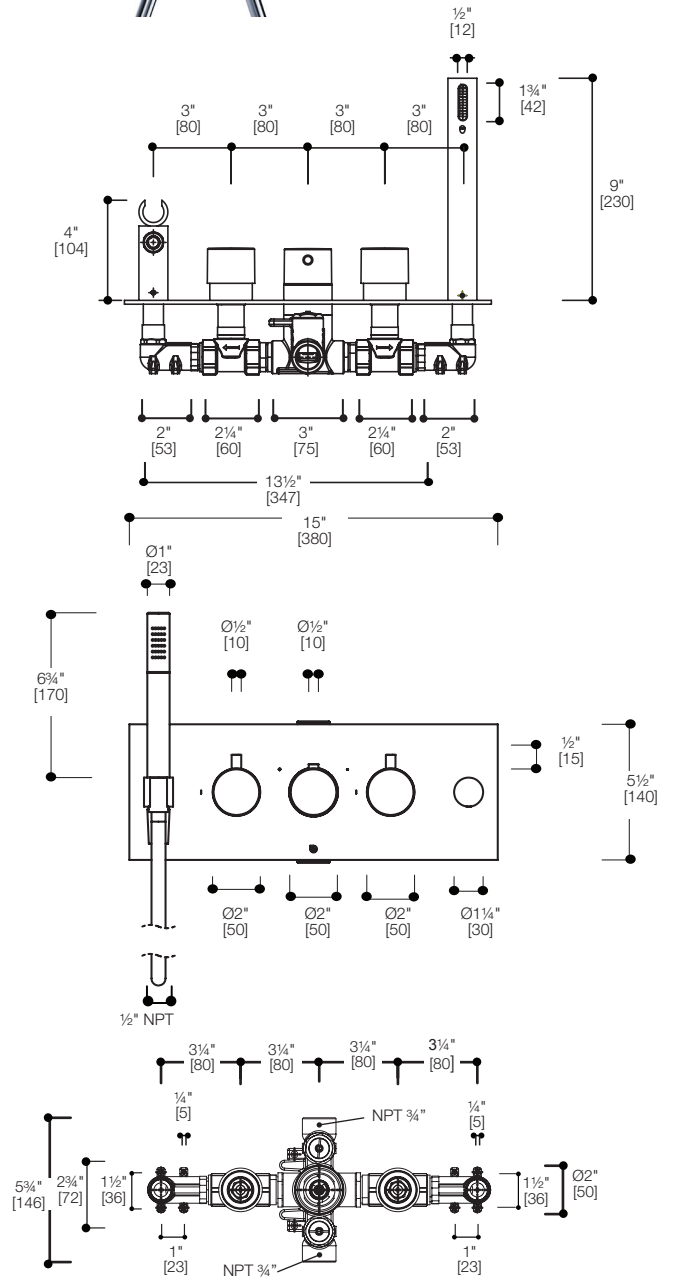
Install this product according to the installation guide. Our products must be installed by certified professionals only and according to our installation guide as well as federal, provincial/state and local building codes and regulations.

### CARE AND MAINTENANCE:

See Installation Manual

### CODES / STANDARDS APPLICABLE:

- Meets or exceeds ANSI / ASME standard A112.18.1 and CAN / CSA B125.1-05 requirements
- Listed with IAPMO bearing the UPC / cUPC mark
- California AB1953 compliant



AB1953 Compliant



\*Approximate measurements for comparison only.  
Note: These dimensions and specifications are subject to change without notice.