

TE702 SPECIFICATIONS

recessed rain shower head

FEATURES:

- Modern, clean, contemporary design
- Durable, polished chrome finish
- Brass construction
- Includes recessed mounting bracket

SPECIFICATIONS:

Warranty:	Lifetime Limited Warranty (Residential) One Year Warranty (Commercial)
Material:	Brass
Spray Nozzles:	144
Flow Rate:	2.0 gpm @ 80 psi
Dimension:	19½" x 19½" (500mm x 500mm)*
Connection:	½"NPT

FINISHES:

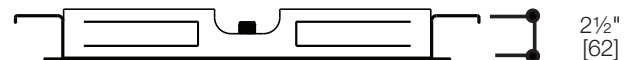
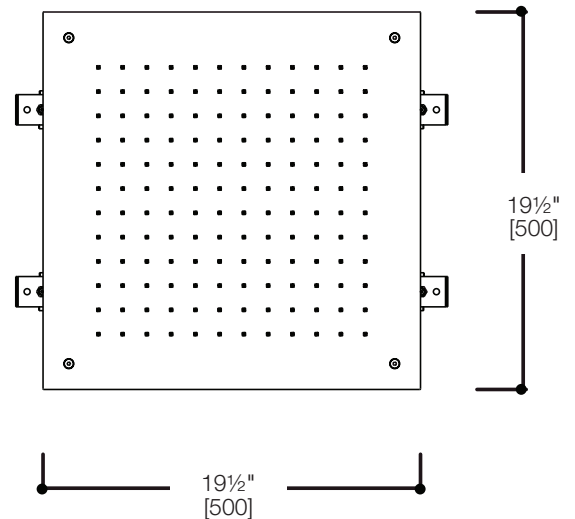
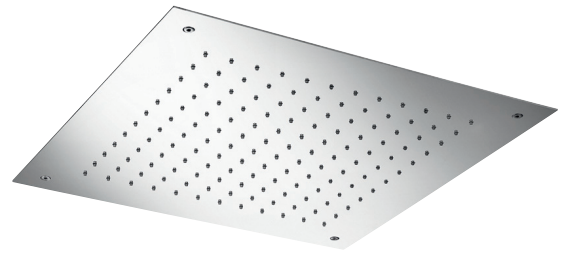
Polished chrome

CODES / STANDARDS APPLICABLE:

- Meets or exceeds ANSI / ASME standard
A112.18.1 and CAN / CSA B125.1-05 requirements
- ASME A112.19.2
- IAPMO / UPC / cUPC

INSTALLATION:

Install this product according to the installation guide.
Our products must be installed by certified professionals only
and according to our installation guide as well as federal,
provincial / state and local building codes and regulations.



CALGreen

*Approximate measurements for comparison only.

Note: These dimensions and specifications are subject to change without notice.