

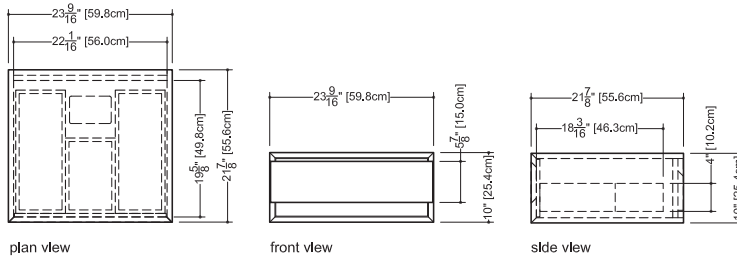
M Collection
 Serie 10" height
 Wall-mount vanity



Furniture

Wall-mount vanity M 2410 WM – 1 drawer – 24" length

21 7/8" depth x 23 9/16" length x 10" height – 557 x 598 x 254 mm



finishes and colors

oak veneer

natural
 white
 wenge
 white-washed
 grey-washed

walnut veneer

natural
 chocolate

matte lacquer

white
 anthracite

- 45 degree bevel cuts precluding the need for drawer hardware
- all natural wood veneer on dimensionally stable MDF core
- AWI rated level 5 marine grade finish for moisture resistance and durability (industry's highest finishing class)
- finished vanity interiors in addition to front and sides finished vanity interiors in addition to front and sides
- solid maple dovetailed drawer
- divider for storage
- slow closing ball bearing glides
- **special wall preparation recommendations**

The distance between studs should not exceed 16". Each stud should be reinforced vertically by 2"x 3" wooden studs and horizontally with 2"x 6" wooden studs at a height of 30" all along the width of the vanity.

WETSTYLE cannot be held responsible for any technical errors and reserves the right to make revisions without notice.

Approximate measurement.
 The manufacturer accepts 1/4" (6.35mm) variance.

www.WETSTYLE.CA - Montreal - Canada
 Tel. 450.536.9000 - 1 888.536.9001 - Fax. 450.536.0202

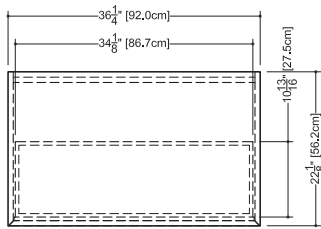


M Collection
 Serie 10" height
 Wall-mount vanity

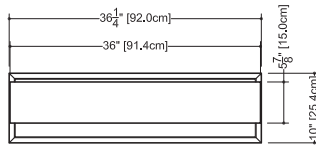


Furniture

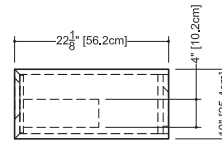
Wall-mount vanity M 3610 WM – 1 drawer – 36" length
 21 7/8" depth x 35 5/8" length x 10" height – 557 x 905 x 254 mm



plan view



front view



side view

finishes and colors

oak veneer

natural
 white
 wenge
 white-washed
 grey-washed

walnut veneer

natural
 chocolate

matte lacquer

white
 anthracite

- 45 degree bevel cuts precluding the need for drawer hardware
- all natural wood veneer on dimensionally stable MDF core
- AWI rated level 5 marine grade finish for moisture resistance and durability (industry's highest finishing class)
- finished vanity interiors in addition to front and sides finished vanity interiors in addition to front and sides
- solid maple dovetailed drawer
- divider for storage
- slow closing ball bearing glides

special wall preparation recommendations

The distance between studs should not exceed 16". Each stud should be reinforced vertically by 2" x 3" wooden studs and horizontally with 2" x 6" wooden studs at a height of 30" all along the width of the vanity.

WETSTYLE cannot be held responsible for any technical errors and reserves the right to make revisions without notice.

Approximate measurement.
 The manufacturer accepts 1/4" (6.35mm) variance.

www.WETSTYLE.CA - Montreal - Canada
 Tel. 450.536.9000 - 1 888.536.9001 - Fax. 450.536.0202



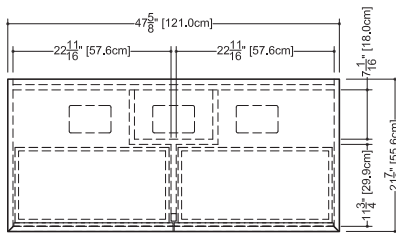
M Collection
 Serie 10" height
 Wall-mount vanity



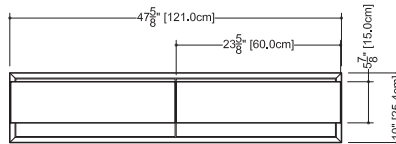
Furniture

Wall-mount vanity M 4810 WM – 2 drawers – 48" length

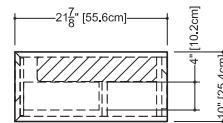
21 7/8" depth x 35 5/8" length x 10" height – 557 x 905 x 254 mm



plan view



front view



side view

finishes and colors

oak veneer

- natural
- white
- wenge
- white-washed
- grey-washed

walnut veneer

- natural
- chocolate

matte lacquer

- white
- anthracite

■ 45 degree bevel cuts precluding the need for drawer hardware

■ all natural wood veneer on dimensionally stable MDF core

■ AWI rated level 5 marine grade finish for moisture resistance and durability (industry's highest finishing class)

■ finished vanity interiors in addition to front and sides finished vanity interiors in addition to front and sides

■ 2 solid maple dovetailed drawers

■ divider for storage

■ slow closing ball bearing glides

special wall preparation recommendations

The distance between studs should not exceed 16". Each stud should be reinforced vertically by 2" x 3" wooden studs and horizontally with 2" x 6" wooden studs at a height of 30" all along the width of the vanity.

WETSTYLE cannot be held responsible for any technical errors and reserves the right to make revisions without notice.

Approximate measurement.
 The manufacturer accepts 1/4" (6.35mm) variance.

www.WETSTYLE.CA - Montreal - Canada
 Tel. 450.536.9000 - 1 888.536.9001 - Fax. 450.536.0202



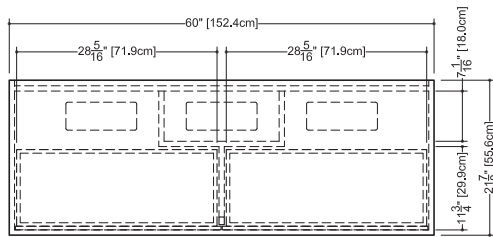
M Collection
 Serie 10" height
 Wall-mount vanity



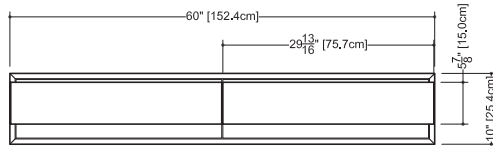
Furniture

Wall-mount vanity M 6010 WM – 2 drawers – 60" length

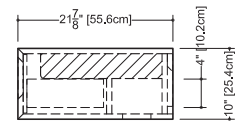
21 7/8" depth x 35 5/8" length x 10" height – 557 x 905 x 254 mm



plan view



front view



side view

finishes and colors

oak veneer

natural
 white
 wenge
 white-washed
 grey-washed

walnut veneer

natural
 chocolate

matte lacquer

white
 anthracite

- 45 degree bevel cuts precluding the need for drawer hardware
- all natural wood veneer on dimensionally stable MDF core
- AWI rated level 5 marine grade finish for moisture resistance and durability (industry's highest finishing class)
- finished vanity interiors in addition to front and sides finished vanity interiors in addition to front and sides
- 2 solid maple dovetailed drawers
- divider for storage
- slow closing ball bearing glides

special wall preparation recommendations

The distance between studs should not exceed 16". Each stud should be reinforced vertically by 2" x 3" wooden studs and horizontally with 2" x 6" wooden studs at a height of 30" all along the width of the vanity.

WETSTYLE cannot be held responsible for any technical errors and reserves the right to make revisions without notice.

Approximate measurement.
 The manufacturer accepts 1/4" (6.35mm) variance.

www.WETSTYLE.CA - Montreal - Canada
 Tel. 450.536.9000 - 1 888.536.9001 - Fax. 450.536.0202

