

# BT0305 SPECIFICATIONS

## halo blu-stone™ freestanding bathtub

### FEATURES:

- Freestanding one-piece blu-stone™ bathtub
- Streamlined, high profile one piece design
- Made of blu-stone™ providing the look and feel of natural stone
- Stronger and more durable than acrylic
- Non-porous, stain resistant surface that does not require sealing
- Does not promote bacteria, mold or fungi
- Includes integral slot overflow & matching blu-stone™ waste cover

### SPECIFICATIONS:

Top Area:	67" (1700mm) x 31½" (800mm)*
To Overflow:	2" (60mm)*
Water Depth:	18" (457mm)*
Capacity:	82G (310L)*
Weight:	385lbs (175kg)*
Hot water supply req'd:	Should be 70% of water capacity of tub or greater
Warranty:	Five Year Warranty (Residential use) One Year Warranty (Commercial use)
Material:	blu-stone™
Shipping Weight:	425lbs (193kg)*

### FINISHES:

- White Matte as standard
- Matte / Gloss finishes available
- Custom colors available - special order

### ACCESSORIES

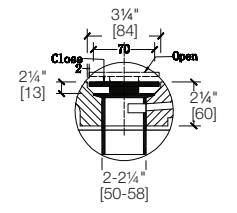
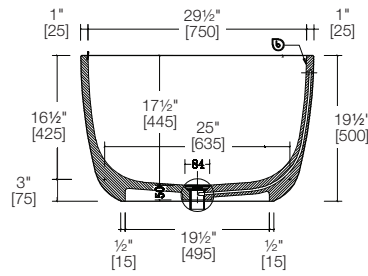
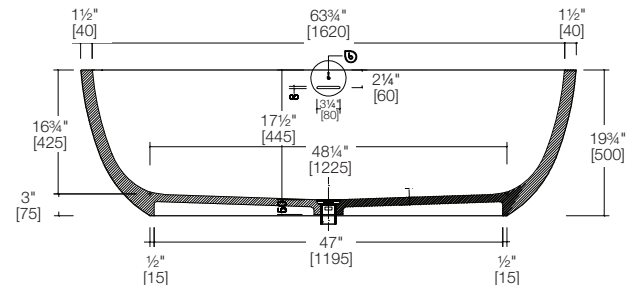
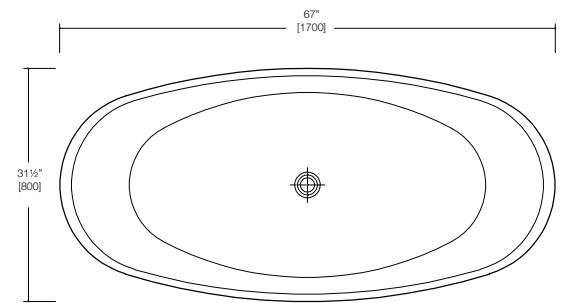
blu-stone™ waste cover

### INSTALLATION NOTES:

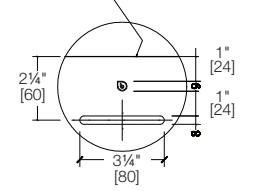
Install this product according to the installation guide.  
Floor support under bath must provide for a minimum of 1400 lbs (635kg). Installation will vary. Our products must be installed by certified professionals only and according to our installation guide as well as federal, provincial / state and local building codes and regulations

### CODES / STANDARDS APPLICABLE:

- Meets or exceeds ANSI / ASME standard Z124.1.2 and CAN / CSA B 45 requirements
- IAPMO / UPC / cUPC



from the top rim of bathtub



\*Approximate measurements for comparison only.  
Note: These dimensions and specifications are subject to change without notice.