

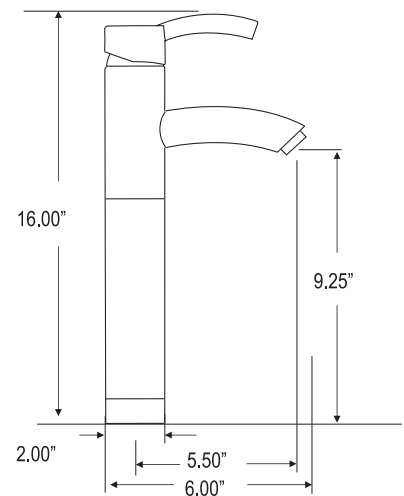


## ADINA EXTENDED SINGLE CONTROL LAVATORY FAUCET

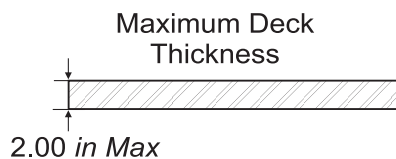
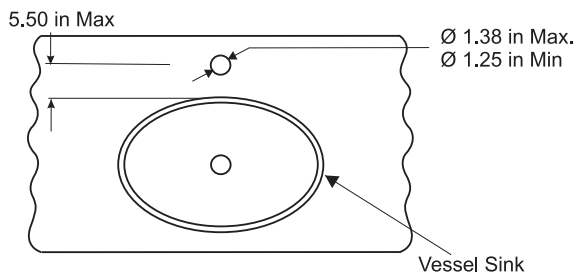
### INSTALLATION INSTRUCTIONS

#### DESCRIPTION

This product is precision engineered to provide satisfactory performance provided it is installed and operated in accordance with our recommendations contained in this manual. In order to fully enjoy the comfort, safety and reliability of your faucet, be certain to familiarize yourself with the contents of this manual.



#### 1. DECK SPECIFICATIONS

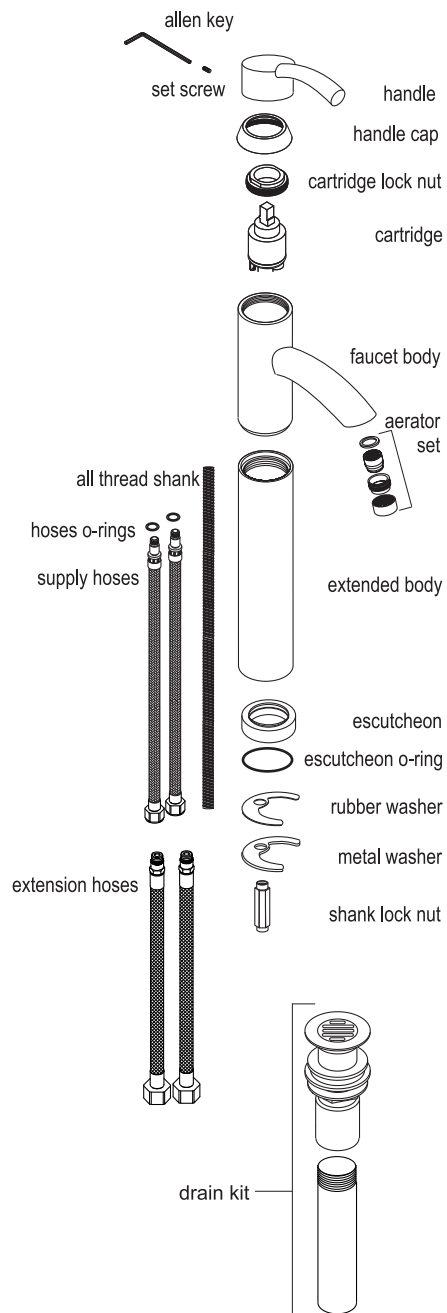
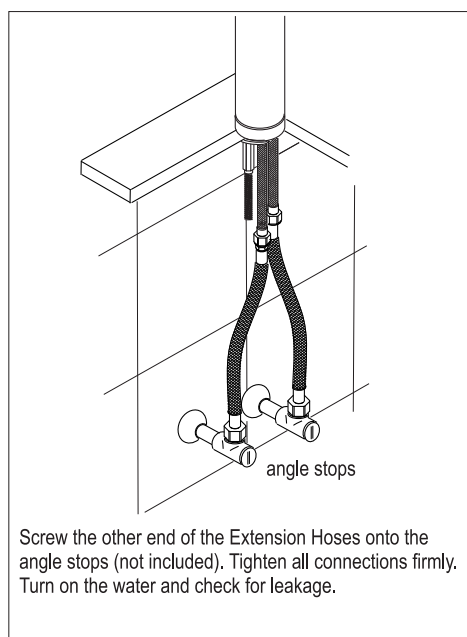
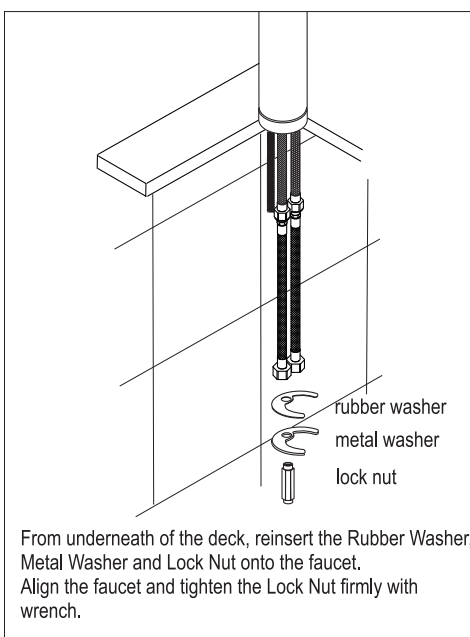
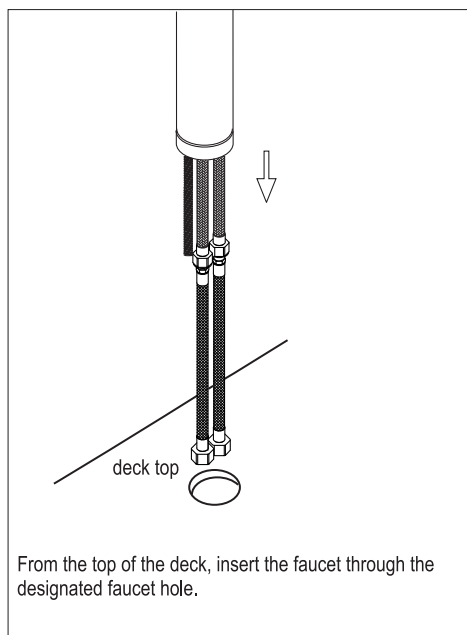
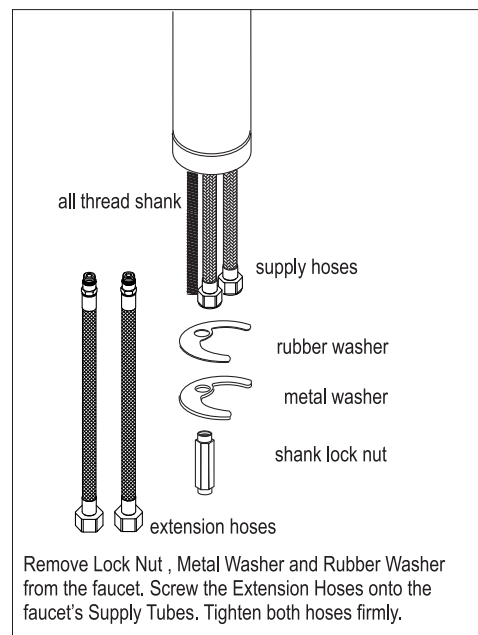


For marble (or similar material) deck, cut in the hole accordingly to the distances indicated in the figure.

Verify the distances before drilling, it is important to make sure you have enough clearance.

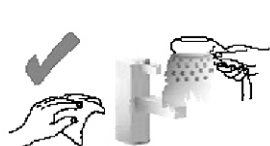
## 2. SPOUT INSTALLATION

FLUSH THE HOT AND COLD WATER SUPPLY LINES BEFORE STARTING THE INSTALLATION



## 3. FAUCET MAINTENANCE

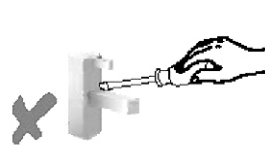
*It is very important to follow these instructions to keep Altmans products' finishes shining and in perfect condition:*



1. Only use a clean cloth and tap water for cleaning.



2. Do not use any kind of chemical, abrasive cleaning products or fibers.



3. Do not use any kind of metal object to clean the finished surfaces.